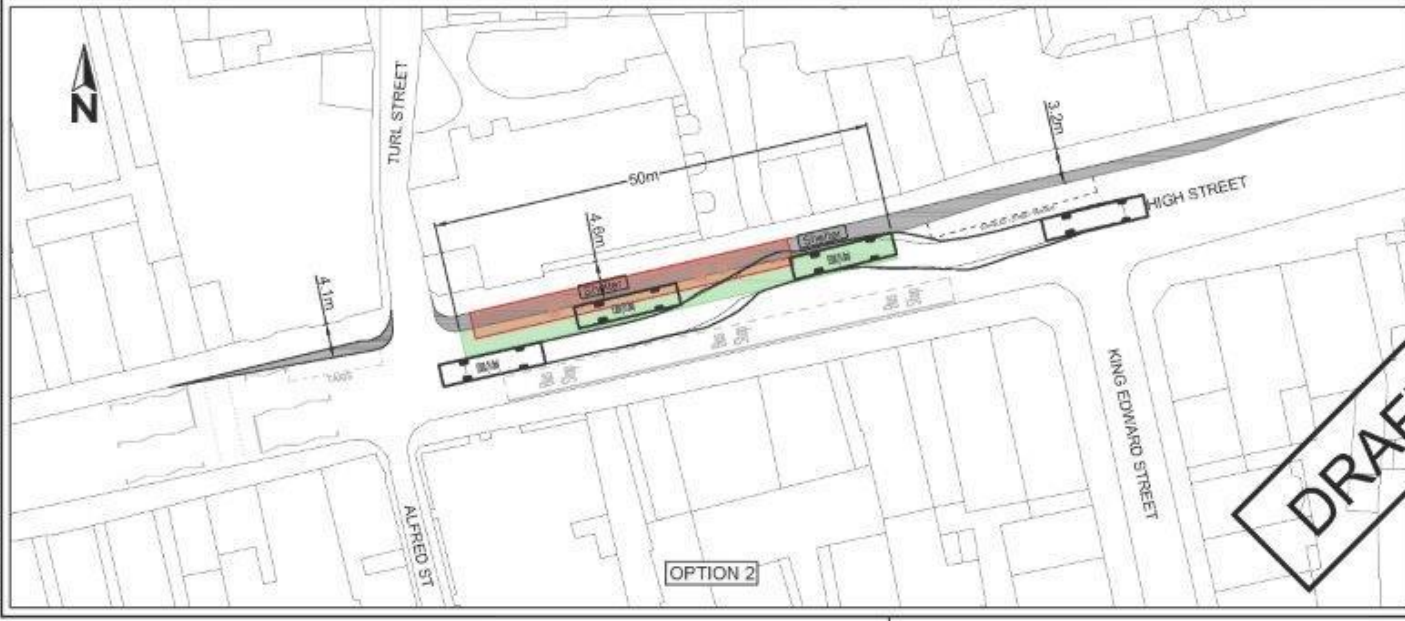


OPTION 1



OPTION 2

Drawing No. S-000700-066-FEA-000-012 Revision 3

- KEY:**
- Existing bus stop to be removed
  - Proposed bus stop
  - Proposed footway build-out

- NOTES:**
1. Vehicle used for tracking is E200 (11.8m)
  2. All dimensions and clearances are indicative as the drawings (incl. vehicle tracking) are based on Ordnance Survey mapping. Any further design work would require a topographical survey.

**SAFETY, HEALTH AND ENVIRONMENTAL INFORMATION**

IN ADDITION TO THE DUTIES NORMALLY ASSOCIATED WITH THE TYPE OF WORK DETAILLED ON THIS DRAWING, NOTE THE FOLLOWING POINTS FOR PERSONAL USE:

CONSTRUCTION  
FEASIBILITY STAGE THEREFORE NOT APPLICABLE

OPERATION/MAINTENANCE  
FEASIBILITY STAGE THEREFORE NOT APPLICABLE

USE  
FEASIBILITY STAGE THEREFORE NOT APPLICABLE

OPERATIONAL CONSIDERATIONS  
FEASIBILITY STAGE THEREFORE NOT APPLICABLE

© Crown Copyright and Database rights 2015 10002340

Rev	Date	Purpose of revision	Drawn	Checked	Approved
1	21.01.16	Initial release	SAC	EA	EA
2	17.02.16	Revised to include bus stop	SAC	MW	MW
3	13.04.16	Revised to include bus stop and footway build-out	SAC	MW	MW

Mark Kemp  
Senior Director - Commercial Development and Economy  
Oxfordshire County Council  
Spencer House  
Spencer Street  
Oxford  
OX1 1BE  
Tel: (01865) 810700  
Fax: (01865) 261877

**Project title**  
City Centre Bus Stops  
Connection to Oxford Station  
(Including Queen Street)

**Drawing title**  
High Street  
New Bus Stops

**Drawing Status**

FEASIBILITY			
Scale @ A3	Drawn by	Checked by	Approved by
1:500	SAC	MW	EA
	Date drawn 7.1.16	Date checked 20.01.16	Date approved 20.01.16

Oxfordshire Project No. & File Ref  
S-000700-066

Drawing No. S-000700-066-FEA-000-012 Revision 3

